



# MONTHLY MEMBERSHIP PROGRESS REPORT

District 120

Results as of: 6/30/2017

GMT: OPEN

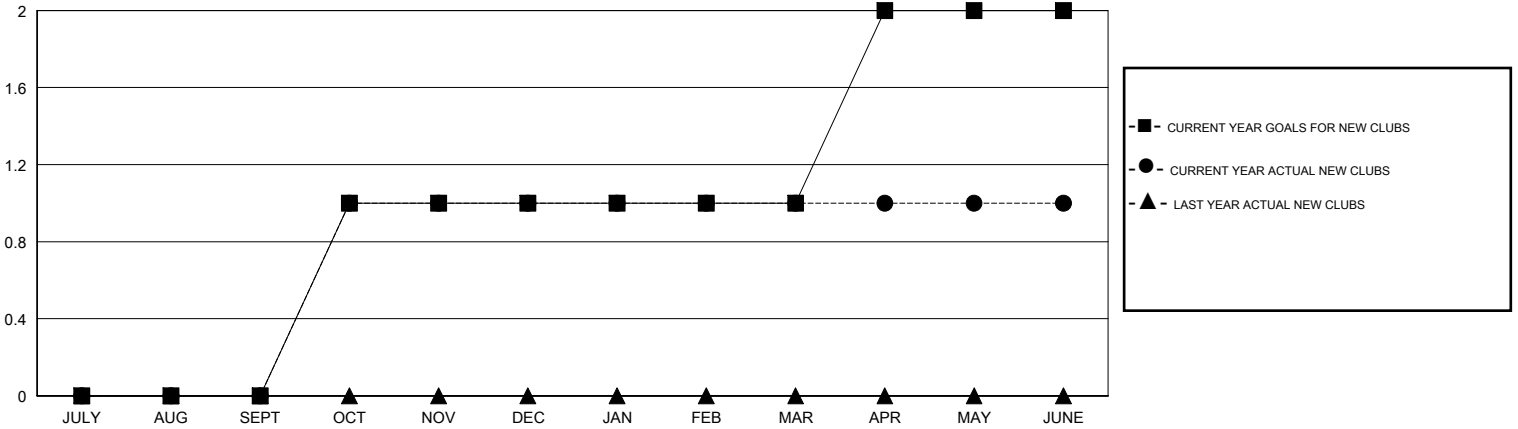
LOCATION ESTONIA

GMT CA

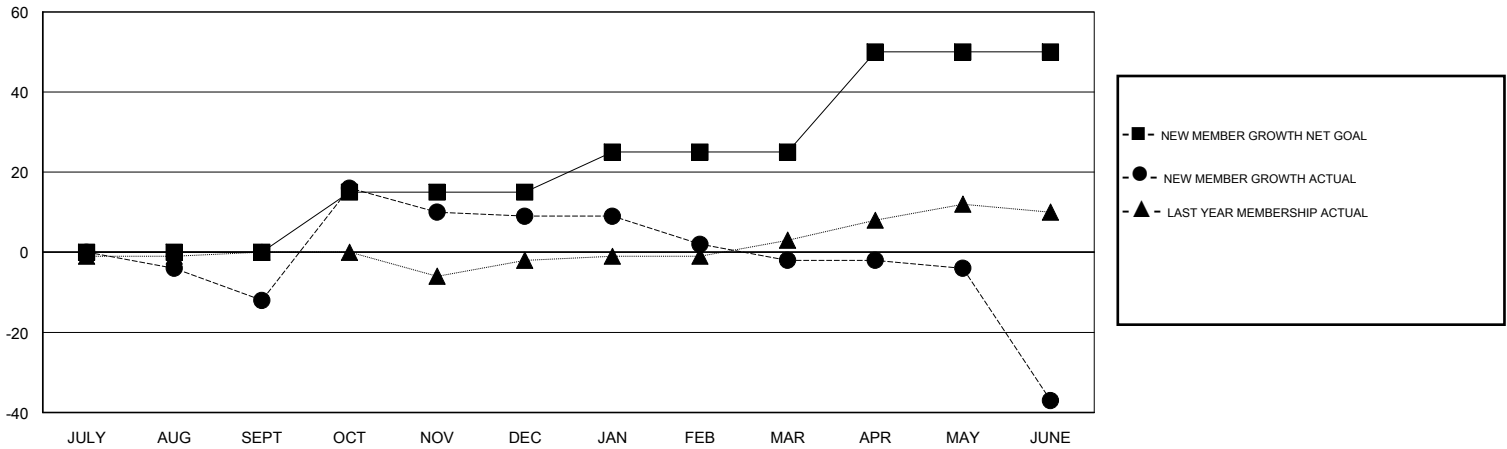
Clubs			
RESULTS FOR 2016-2017			
QUARTER	NEW CLUB GOAL	NEW CLUBS	DROPPED CLUBS
JULY/AUG/SEPT	0	0	0
OCT/NOV/DEC	1	1	0
JAN/FEB/MAR	0	0	0
APR/MAY/JUNE	1	0	0

Members			
RESULTS FOR 2016-2017			
QUARTER	NEW MEMBER GROWTH NET GOAL (not reinstated or transfers)	NEW MEMBER GROWTH ACTUAL (not reinstated or transfers)	DROPPED MEMBERS ACTUAL (including transfers)
JULY/AUG/SEPT	0	4	16
OCT/NOV/DEC	15	54	33
JAN/FEB/MAR	10	15	26
APR/MAY/JUNE	25	18	53

GOALS AND ACTUAL NEW CLUBS CUMULATIVE



GOALS AND ACTUAL MEMBERS CUMULATIVE



DROPPED CLUBS: 0	27 CLUBS OF 61 ADDED 1 OR MORE NEW MEMBERS	<u>GENDER DISTRIBUTION</u>	
DROPPED MEMBERS		MALE	873 (71.09%)
DECEASED	3	FEMALE	355 (28.91%)
CLUB CANCELLED	0	TOTAL FAMILY UNIT MEMBERS	
OTHER	125	85	
TOTAL	128	FAMILY MEMBERS PAYING HALF DUES	
		44	

[CLICK HERE FOR CUMULATIVE MEMBERSHIP DATA](#)